

# MOLONEY & SONS ENGINEERING

---

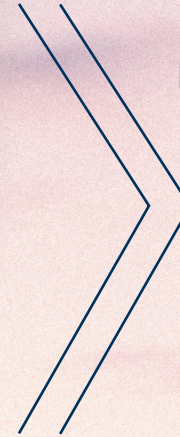


*excellence integrity innovation*



A **declaration** of how  
we can help ensure your  
project is a **success**

WITH PRINCIPALS IN  
EVERY MAJOR CITY  
ON THE EASTERN  
SEABOARD, WE'RE  
*never too far*  
AWAY.



TOWNSVILLE  
MACKAY  
ROCKHAMPTON  
GLADSTONE  
ROMA  
MILES  
CHINCHILLA  
BRISBANE  
GOLD COAST  
TENTERFIELD  
CANBERRA  
COFFS HARBOUR  
SYDNEY



*We Service Australia Wide*

# VALUES

## *Integrity*

We operate from a place of truth and honesty which holds us to our core principles. In everything we do our yes' are yes and our no's are no.

We consistently strive to achieve the highest of standards in all we produce and portray, both with our projects and in our internal operations.

## *Excellence*

## *Innovation*

We are continually pioneering new concepts to improve our clients' results.

We pride ourselves on always being available for our clients and taking a genuine interest in their projects and ideas.

## *Approachable*

## *Generosity*

We believe business should contribute to society. We are continuously looking for opportunities to bless others.

We value everybody at every level, and show respect at every opportunity.

## *Honouring*

## *Example*

We aspire to raise the bar on our standards and become better than what we were yesterday.

Hard work is the backbone of our business and when the work is done, we find ways to enjoy the journey.

## *Celebrate Wins*

## **OUR MANDATE TO YOU IS:**

To ensure accurate information and prompt production the first time through direct and proactive communication.

Focused towards producing enhanced design solutions, bridging the gap between innovation and common engineering practice.

An acute attention to detail in all documentation from broad concept to detailed design for construction.

Committed to provide professional, technical and honest engineering advice to assist in safeguarding the success of your project;

A desire to bring a value adding experience to all our corporate relationships;

With all our endeavours based on a work philosophy to

*"under commit and over perform".*

# OUR | WORK



MOLONEY & SONS OFFERS A STRONG DELIVERY TEAM OF PROFESSIONALS WHO SACRIFICE THEMSELVES TO ENSURE MAJOR PROJECT DELIVERY

*ahead of schedule & within budget.*

# OUR SERVICES



CIVIL INFRASTRUCTURE & PLANNING



WATER & ENVIRONMENTAL MANAGEMENT



STRUCTURAL ENGINEERING



UAV OPERATIONS

# PROJECT

# *snap* SHOTS

---





# WATER & SEWER TREATMENT PLANTS

*Parkes, NSW*



PARKES SHIRE COUNCIL

## *Scope:*

Moloney & Son's Engineering (MSE) were engaged by the Principal D&C Contractor to assist them through Design & Construct phases of the development. MSE played a key role in assisting the Contractor with the investigation of economic & energy efficient building alternatives for the projects services and infrastructure design whilst adhering to it's principals project requirements.

## *Project Value:*

\$63.5M

## *Key Responsibilities:*

As the Lead Building Design Consultancy, MSE delivered the following services:

- Concept to For Construction Architectural, Structural, Hydraulic, Mechanical, Electrical & Landscaping Design;
- Project Management;
- Design Office Support; &
- Site Construction Supervision.





# WATER & SEWER TREATMENT PLANTS

*Parkees, NSW*

**John Holland Group have worked tirelessly together with their lead consultancies & contractors to deliver the Parkes Shire Council (PSC) with two key prominent & energy efficient Treatment Plants for the Shires Water & Sewage Infrastructure.**



## *Scope:*

Design development, approvals & Construction of a 1200m<sup>2</sup> commercial trading Facility. Including; 3D building infrastructure Modelling, internal hardstand, stormwater management & external road widening.

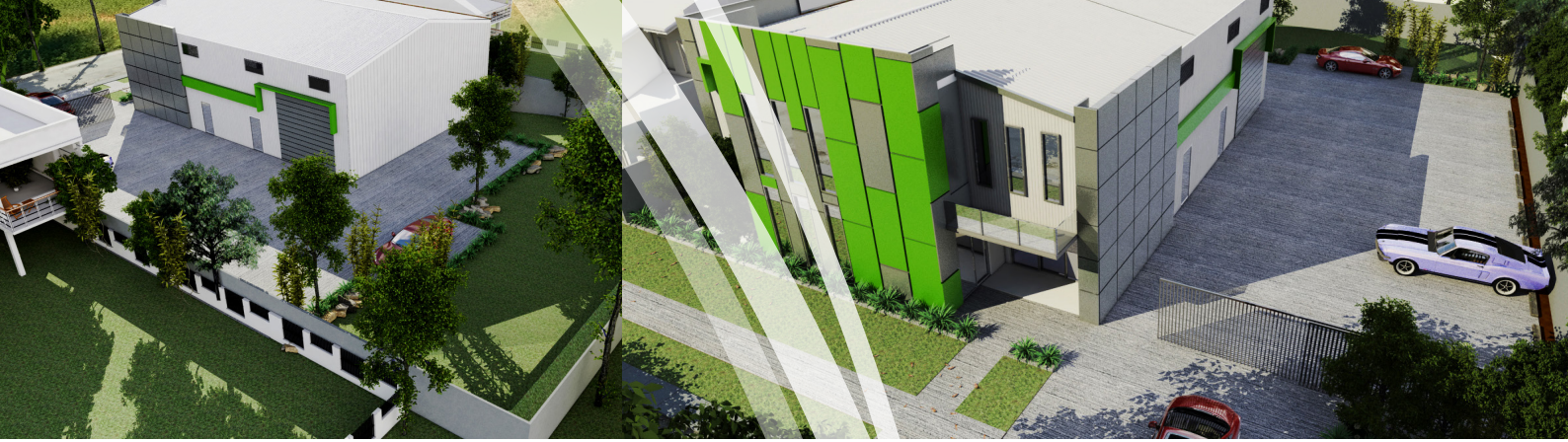
## *Key Responsibilities:*

As the Lead Engineering Consultancy, MSE delivered the following services;

- Concept to For Construction, Structural & Civil development planning and engineering;
- Project Management;
- Development & Operational Works approvals; &
- Design Office Support
- Site Construction Supervision.

**MSE have been working in unity with Surat Basin Builders to deliver a first class commercial trading facility for Busy Bee Signs in Chinichilla, Queensland. It has been a streamlined process with exceptional effort from all stakeholders, recently achieving operational works approval from council and shortly going to construction in the New Year.**

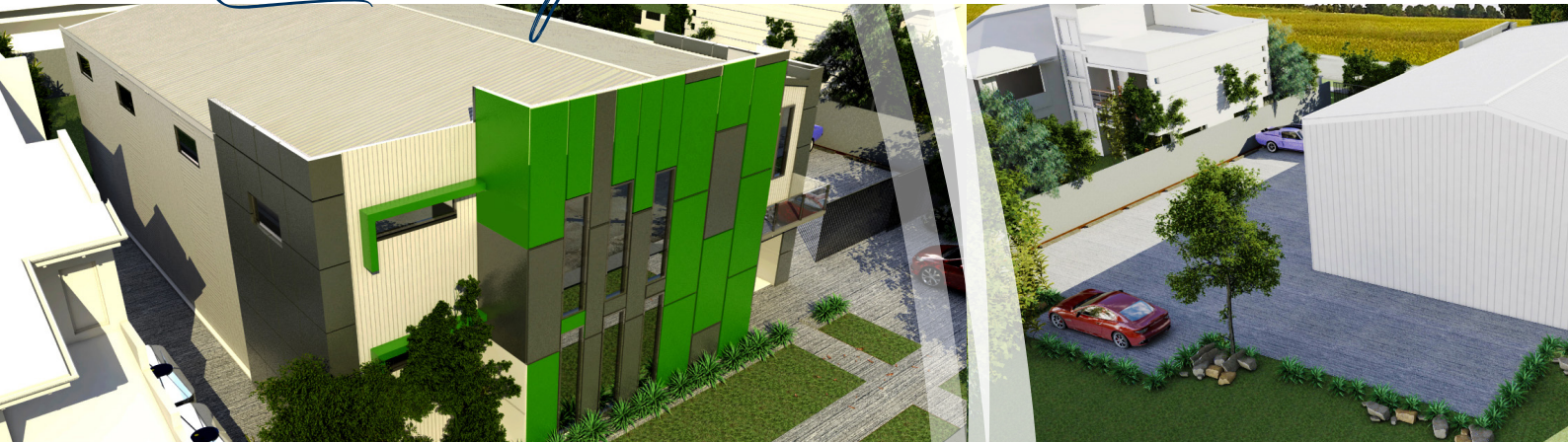
COMMERCIAL FACILITY  
*Chinichilla, qld*



# COMMERCIAL FACILITY

*Chinchilla, qld*

---



*Scope:*

Construction of 9 Townhouse Units, including internal hardstand & LGA stormwater infrastructure extension.

*Key Responsibilities:*

As the project's lead consultant, we were responsible for the delivery of innovative design solutions & cost effective construction strategies of the following elements:

- Construction Administration & Supervision.



## 9 UNIT TOWNHOUSE DEVELOPMENT

*Everton Hills, qld*



Proudly delivered by Surat Basin Homes, we see their partnership with Caspian Property Group provide this booming urban community with another 9 townhouses in Everton Hills, Queensland.



# BRIDGE & ROAD DESIGN OVER ROMIAKA CHANNEL

*Jamba, nsw*



## *Scope:*

Moloney & Son's Engineering (MSE) were engaged by the Principal D&C Contractor/Bridge Knowledge Pty Ltd to assist them through Design & Construction phases of the infrastructure upgrade.

MSE played a key role in assisting the Contractor with an intuitive design development process, presenting alternative configuration arrangements of the road carriageway & pathways, providing project cost savings & working within environmental impact constraints.

## *Key Responsibilities:*

As the lead Design Engineers, MSE delivered the following services:

- Project Management, including:
  - Durability Assessments;
  - Safety in Design;
  - Life Cycle Costing advice;
- Civil & Structural Road & Bridge Design from Concept options analysis to For Construction documentation.

# MT LINDESAY ROAD

# UPGRADE

*Tenterfield, NSW*



**Tenterfield Shire Council & MSE have developed a trusting & transparent partnership to set a focus upon improving one of the worst sections of the former New England Highway. This multi-million dollar upgrade will be one of the many improvements to the Mt Lindesay Rd, providing quicker & safer haulage routes for the agricultural industry.**

### *Scope:*

Moloney & Son's Engineering were engaged by Tenterfield Shire Council to assist them with a portioned upgrade to the former State Highway No. 24 Mt Lindesay Rd, stretching from Tenterfield via Woodenbong to the QLD border at Mt Lindesay, previously part of the New England Highway.

MSE played a key role in assisting the Principal with an intuitive design development process for the 2.4km section of road. Presenting alternative configuration alignments, providing improved horizontal/vertical geometry making it a safer environment for the heavy vehicle transport route & simultaneously ensuring the confirmed alignment economical advantages for the Council in construction and through its Life Cycle.

### *Key Responsibilities:*

As the lead Consulting Engineers, MSE delivered the following services:

- Project Management, including:
  - Detailed Engineering Survey;
  - Geotechnical Investigation;
  - REF Reporting;
  - Land Acquisition Plans;
  - Tender & Contract Documentation & Specifications
- Civil Road Design from Concept options analysis to For Construction documentation.

**As part of the local Government's asset management & infrastructure plan, MSE & Bridge Knowledge formed a strategic alliance in partnership with Lifting Point in the design & delivery of their pre-formed "InQuik" bridging system, making concrete bridge building faster, safer & cheaper.**

# REIDS CREEK BRIDGE UPGRADE

*Bellingen, nsw*

## *Scope:*

Moloney & Son's Engineering (MSE) were engaged by the Principal D&C Contractor/ Bridge Knowledge Pty Ltd to assist them through Design & Construction phases for a new proprietary bridging system "InQuik" & road re-alignment project over Moody's Creek in Bellingen NSW.

## *Key Responsibilities:*

As the lead Design Engineers, MSE delivered the following services:

- All civil engineering & design for the required road re-alignment & widening;
- Civil & Structural Bridge Design from Concept options analysis to For Construction documentation.
- MSE also has played a key role in assisting the Principal & manufacturer with intuitive foundational designs, constructibility assessments & resulting design solutions for bridge & barrier hold downs.



**Bellingen Shire  
COUNCIL**



# 4KM OF 4 LANE CORRIDOR PLANNING

*Waterford - Tambourine*



*Key Responsibilities:*  
performed preliminary  
planning feasibility study &  
concept engineering & design

*Responsible Employee:*  
Lloyd Moloney, Principal  
Engineer



HEIGHTS COLLEGE OVAL

*Rockhampton, qld*



## *Scope:*

Heights College engaged with MSE to deliver a solution for a full sized Sporting Oval on their Rockhampton Property.

## *Key Responsibilities:*

As the Principal Engineers, MSE was able to develop a design suitable to co-exist with the natural Flood Impacts imposed by Splitters Ck. Reducing earthworks quantities and achieving nil flood impacts on surrounding properties.

### **MSE delivered:**

- Development Applications
- Council Liaison
- Civil Engineering Design & Certification
- Flood Modeling
- Construction Supervision



# HEIGHTS COLLEGE OVAL

*Rockhampton, qld*





# 14 UNIT TOWNHOUSE DEVELOPMENT

*Miles, gld*



## *Scope:*

Construction of 14 Townhouse Units, including internal hardstand & LGA stormwater infrastructure extension.

## *Key Responsibilities:*

As the project's lead consultant, we were responsible for the delivery of innovative design solutions & cost effective construction strategies of the following elements:

- Concept to For Construction, Structural & Civil development planning and engineering;
- Project Management;
- Development & Operational Works approval;
- Design Office Support; &
- Construction Administration & Supervision.

**Proudly delivered by Horizon Housing, we see their partnership with Western Downs Housing Trust provide this booming rural community with another 14 affordable townhouses for key workers in Miles, Queensland.**

# 14 UNIT TOWNHOUSE DEVELOPMENT

*Miles, qld*



TOLL NQX LOGISTICS FACILITY

*Gracemere, qld*

**Gibb Group Property Services teamed up with the local council/ authorities & businesses to go above and beyond in providing the Central Queensland region with its very own prestigious industrial land precinct in Gracemere, Queensland.**

*Scope:*

Moloney & Sons Engineering performed the role as a developers representative for local assistance in the endeavour to provide their National Client with a turn-key solution strategy for the management of the Building Contract during the remaining Defect's Liability Period.

*Key Responsibilities:*

- Project Management Services;
- Contract Administration; &
- Procurement Strategy

TOLL NQX LOGISTICS FACILITY

*Gracemere, qld*

**GibbGroup.**



Ahrens

Charter  
Hall





# MEDIUM DENSITY DEVELOPMENT

*Coovener, gld*





**Proudly delivered in partnership with  
Caspian Property Group and Runaway  
Mews.**

*Scope:*

Medium density development of 9 residential allotments featuring two and three storey townhouses.

*Key Responsibilities:*

As the project's lead consultant, we were responsible for the delivery of innovative design solutions & cost effective construction strategies of the following elements:

- Concept to For Construction, Civil development planning and engineering;
- Project Management;
- Development & Operational Works approval;
- Design Office Support; &
- Contract Administration & Construction Supervision.

## MEDIUM DENSITY DEVELOPMENT

*Coovenera, qld*



# 5 UNIT TOWNHOUSE DEVELOPMENT

*Chinchilla, qld*



### *Scope:*

Construction of 5 Townhouse Units, including; internal hardstand, water & sewer reticulation, stormwater management & external road-widening.

### *Key Responsibilities:*

As the responsible principal civil engineering consultant, MSE assisted it's client in the delivery of innovative design solutions & cost effective construction strategies of the following elements:

- Preliminary engineering documentation suitable for Material Change of Use Development Approval.
- Engineering documentation for Operational Works Approval from relevant authorities. &
- Project Compliance Management

**Whilst working for Horizon Housing in assistance with their Development & Property Management role. We see the Western Downs Housing Trust, provide yet another five affordable townhouses for key workers in Chinchilla, Queensland.**

## 5 UNIT TOWNHOUSE DEVELOPMENT

*Chinchilla, qld*





# CHILD CARE CENTRE DEVELOPMENT

*Frenchville, qld*



**Morrison Property Group worked vigorously together with their contractors & consultancies to ensure the prominent delivery of their Child Care Facility in Frenchville, Rockhampton for 2016 new year intake.**



*Scope:*

Moloney & Sons Engineering were engaged by the principal engineering consultancy (pinnacle engineering group) to assist them with local resources to provide direct Construction Supervision Services between the Developer and Principal Contractor for the delivery of the Child Care Development.

*Key Responsibilities:*

As the supervising engineers, Moloney & Sons provided direct supervision of the construction on behalf of Pinnacle Engineering Group for the following services:

- Project Management Services;
- Design Office Support; &
- Construction Supervision.

## CHILD CARE CENTRE DEVELOPMENT

*Frenchville, qld*

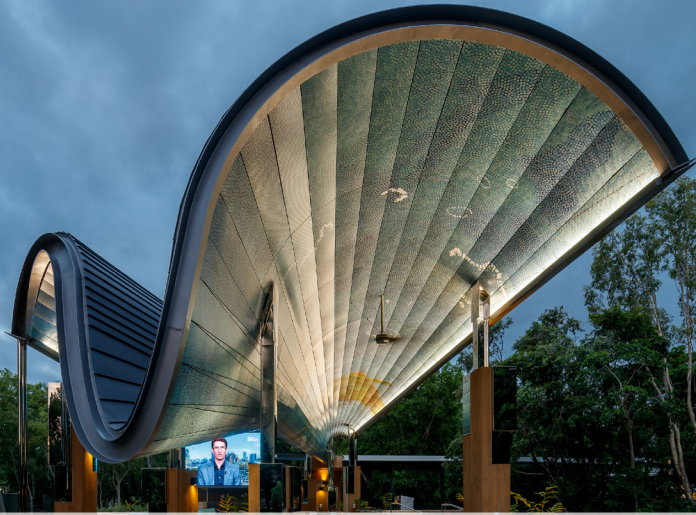


# JCU CENTRAL PLAZA

*Townsville, qld*

With the presented issues at hand, MSE went to work bringing

**continuous engineering improvement**  
to the design by changing member profiles &  
introducing custom fabricated members pieced  
together out of 2D laser cut parts.



JCU CENTRAL PLAZA

*Townsville, qld*



**woollam**  
CONSTRUCTIONS

*Scope:*

MSE was engaged as a result of our strong RPEQ Engineering Design & 3D modelling capabilities coupled with our manufacturing ability, to assist in solving the extensive constructability issues involved with the proposed design. The Precinct's Covered area was riddled with complex member design not possible to clearly illustrate on paper. A raft of members involved complex biaxial rotation & tight curve radii's beyond the members and present day manufacturing capacity.

*Key Responsibilities:*

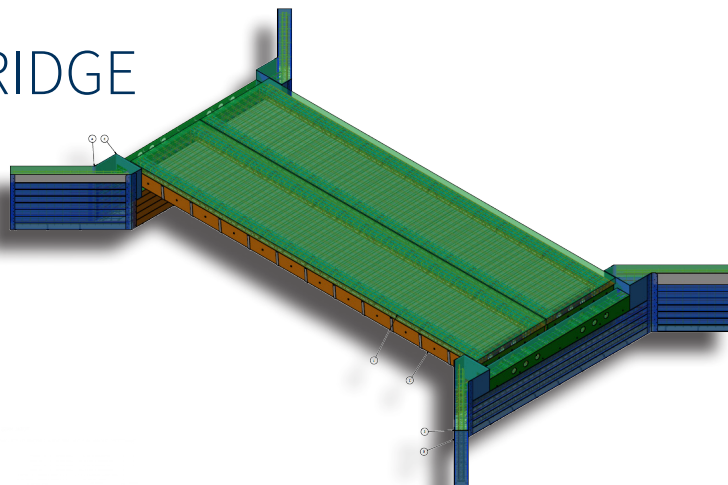
A real KEY to this projects resolution was found in MSE's Team experience, Tradesmen with the Engineering 'Know-How' & team to spot construction limitations & solve them.

MSE delivered to Structural Steel Detailing & Modelling for the Townsville JS Welding Company to complete its fabrication.



# CADDIES CREEK FOOTBRIDGE

*Rose Hill, NSW*



**THE HILLS**  
Sydney's Garden Shire



# CADDIES CREEK FOOTBRIDGE

*Rouse Hill, NSW*

## *Scope:*

Moloney & Son's Engineering (MSE) were engaged by the Principal D&C Contractor/ Bridge Knowledge Pty Ltd to assist them through Design & Construction phases for a new proprietary bridging system "InQuik".

## *Key Responsibilities:*

As the lead Design Engineers, MSE delivered the following services:

- Civil & Structural Bridge Design from Concept options analysis to For Construction documentation.
- MSE has played a key role in assisting the Principal with intuitive foundational designs, constructibility assessments & resulting design solutions for bridge & barrier hold downs.



## BRINDABELLA ROAD UPGRADE

*From the act & NSW Border to the Goodradigbee River*

**Ever since 1908 when Canberra became the Capital of Australia, the people of Tumut and areas west of Canberra have been in high demand for a direct route linking Tumut and Canberra. Snowy Valley Council & MSE have re-started the engines to begin paving the way for this generational dream to come to fruition, opening up a quicker & safer haulage routes for the agricultural industry & tourism who would be set to benefit from the proposed upgrades.**

### *Key Responsibilities:*

As the lead Consulting Engineers, MSE delivered the following services:

- Project Management, including:  
Detailed Engineering Survey;  
Geotechnical Investigation;  
REF Reporting;  
Tender & Contract Documentation & Specifications
- Civil Road Design from Concept options analysis to For Construction documentation.

### *Scope:*

Moloney & Son's Engineering were engaged by Snowy Valley to assist them with a portioned upgrade, stretching from ACT/NSW Border approx. 1300m above sea level down to Goodradigbee River.

MSE played a key role in assisting the Principal with an intuitive design development process for the 10km section of road. Presenting alternative configuration alignments, 3D visualisations, providing improved horizontal/ vertical geometry making it a safer environment for the heavy vehicle transport route & simultaneously ensuring the confirmed alignment economical advantages for the Council in construction and through its Life Cycle.

## BRINDABELLA ROAD UPGRADE

*From the act & nsw Border to the Goodradigbee River*

STEWART FIELD RD



# BOBEYAN ROAD UPGRADE

*From the Administration to the new East Border*

# BOBEYAN ROAD UPGRADE

*From the Adaminaby to the NSW & ACT Border*



**Identified as a key enabler for realising positive benefits from regional investments, Bobeyan Rd is set to be the beneficiary of coming upgrades to further improve the connectivity to Canberra from the region. These upgrades will bring improved connectivity, traffic movements bringing future growth to regional residents and product and labour markets. In the effort to get this programme 'shovel ready', MSE was honoured to be apart of a key team between Snowy Valley & Snowy Monaro Regional Councils.**



*Scope:*

Moloney & Son's Engineering were engaged by Snowy Valley to assist them in the early Project Planning Stages of the proposed 20km upgrade, stretching from the ACT/NSW Border approx. to Adaminaby, NSW.

MSE developed a high level 3D Conceptual Visualisation model & informative 'Fly-Through' suitable for community consultation and Council Workshops in further developing the project.





# DOG ON THE TUCKERBOX & COOLAC TRUNK WATER SUPPLY FROM GUNDAGAI

*Gundagai, NSW*

## *Key Responsibilities:*

As the lead Consulting Engineers, MSE delivered the following services:

Project Management, including:  
Concept, Preliminary & Detailed Design of the proposed Trunk Main infrastructure, including; hydraulic, pumping & storage requirements.  
Construction Specifications; &  
Detailed Engineering Survey.

**Cootamundra Gundagai Regional Council currently provides water supply to the townships of Cootamundra and Gundagai and part of the Dog on the Tucker Box. At present part of the Dog on the Tucker Box area is supplied with partially treated water, pumped from Murrumbidgee River. The project objective is to Design & Construct a ~6km Trunk Water Supply from Gundagai to Dog on the Tucker Box during Stage 1 and to develop a concept design by sizing the ~11km upstream infrastructure to cater for current and future demands for the Coolac Village.**

DOG ON THE TUCKERBOX & COOLAC TRUNK WATER SUPPLY

*Gundagai, NSW* FROM GUNDAGAI




**COOTAMUNDRA-  
GUNDAGAI**  
REGIONAL  
COUNCIL



# UNITED SERVICE STATION

Gladstone, qld



An aerial photograph of a large industrial-style building with a blue corrugated metal roof. The building has a drive-thru section on the left side. The surrounding area includes a paved parking lot with several parking spaces, some of which are marked with yellow lines. There are also some trees and a road visible in the background. The text is overlaid on the top left of the image.

**MSE teamed up with Hutching O'Brien to deliver an economical development in the heart of Gladstone.**

*Scope:*

Moloney & Sons Engineering provided consultation through all planning stages, development approval, through to operational works, engineering documentation and certification.

Success was achieved by consistent and transparent communication between all stakeholders.

UNITED SERVICE STATION  
*Gladstone, qld*



NORTH ROCKHAMPTON  
SPECIAL SCHOOL

*Rockhampton, qld*

**From Tender Concept to For Construction, our engineers were able to refine the steel design, by shaving a little over 2T of steel and approx. ~\$12k off our tender price, delivering a more economical build for the Client.**

### *Scope:*

The North Rockhampton Special School was a complete Design & Construct for MSE, delivering all Structural Engineering Design & Certification for the school's new Covered Area.

### *Key Responsibilities:*

As specialist Structural Engineers, MSE was able to provide a refined Concept Tender design which reduced the Client's steel tonnage by 2T bringing the competitive edge to the structure's design & construction costs.

Moloney & Sons delivered a full D&C solution for the structure including:

- Engineering Design & Certification
- Construction Supervision
- Shop Detailing
- Structural Steel Supply & Install

NORTH ROCKHAMPTON SPECIAL SCHOOL

*Rockhampton, qld*



## *Scope:*

MSE were engaged by the Principal Contractor (Hutchinson Builders) as the Principal Structural Consulting Engineers to deliver the projects complete structural engineering design & Engineering Manufacturers for supply and install of all Structural Steel for the newly completed 2500sqm ARB Showroom/Warehouse in Rockhampton Q

## *Project Value:*

3.1 Million

## *Key Responsibilities:*

- Complete structural engineering design from Preliminary to IFC documentation of all concrete works, foundations/footings, hardstands, tilt panels & structural steel;
- In house supply of all tilt panel & structural steel shop detail drawings, review and approval;
- Review/Approval of all temporary propping and deadman anchorage;
- Supply and installation of all structural steel framing, wall girts, roof purlins, titl to tilt connections & cast-in tilt plates.
- Construction certification of all structural works.

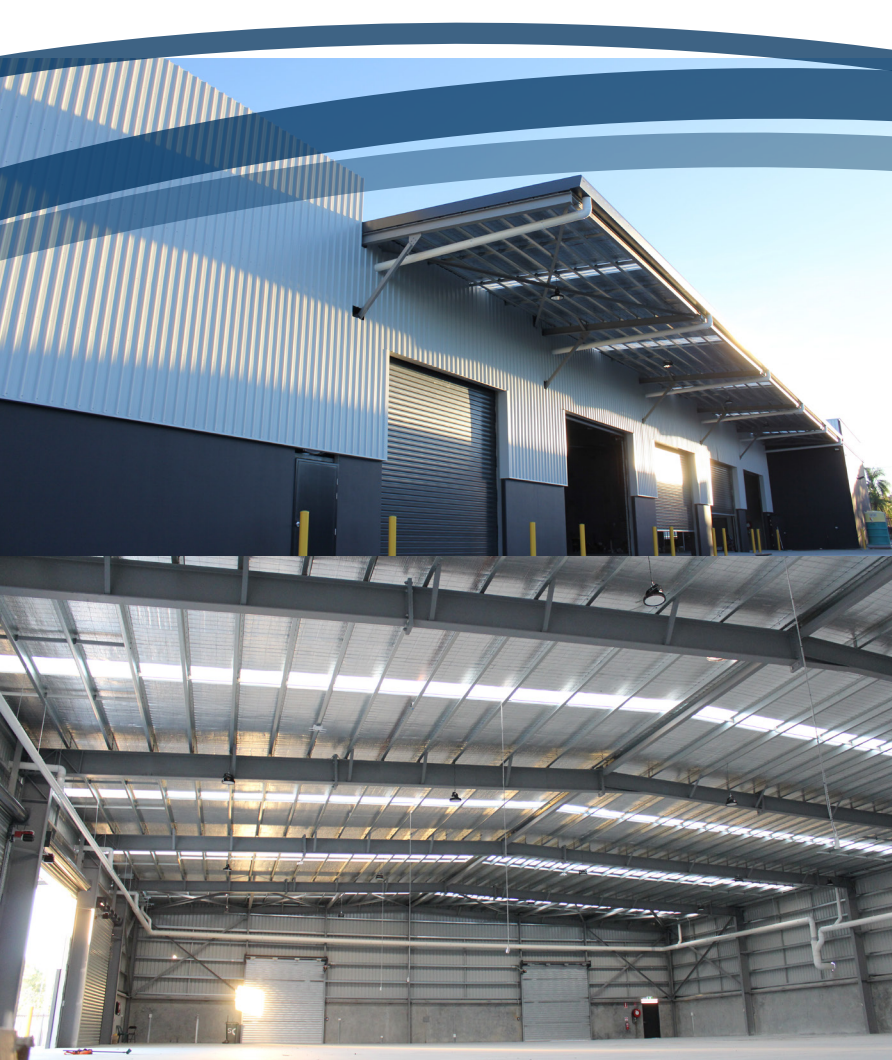


ARB SHOWROOM & WORKSHOP

*Rockhampton, qld*

**HUTCHINSON  
BUILDERS**

Established 1912



ARB  
SHOWROOM  
& WORKSHOP

*Rockhampton, qld*

# ABOUT US >>

Moloney & Sons are dedicated to establishing a profound reputation built upon personal yet professional engineering services. Providing our clients with direct access to a proactive and readily available senior resource team, offering decades of experience in projects ranging from major infrastructure works to local urban developments. The organizations key leaders have developed their engineering skills in remote areas such as Central Queensland and New South Wales, to high density coastal regions and also stretching as far as the UK & Singapore; enabling us to provide economic and yet innovative engineering solutions to all our valued client base.

Whilst continually looking to improve our services, Moloney

& Sons have implemented and pioneered a new unique, virtual/remote business management structure. Enabling us to change the way

*consulting engineering* is perceived and received in the marketplace. Resulting in comprehensive, professional engineering services at unparalleled competitive market values whilst maintaining our statutes of absolute excellence.

At Moloney & Sons, it's Godly principles, client value, a people focused attitude and a desire for excellence in all our projects that helps set us apart. With an invested interest in your projects success, at Moloney & Sons you will not be treated as another client but welcomed as part of the family.



# CIVIL INFRASTRUCTURE & PLANNING



Our willing and available team contribute a wealth of experience stretching across Australia to the UK, PNG & Vanuatu. Providing our clients investments/projects the best opportunity for success, through broader design perspectives/openness to innovation, problem solving attitudes and an understanding of local constraints is delivered through the following core services:

## *Civil Infrastructure*

### - Residential/Commercial/Industrial Land Development:

- Rural & Urban Sub-Divisions, including Commercial Precincts; &
- Medium to High Density Urban Designs.

### - Mining:

- Haul & Light Vehicle Roads & Hardstands; &
- De-Watering.

### - Transport:

- Major & Minor Highway Engineering; &
- Traffic & Pavement Impact Assessments;

### - Public Utilities:

- Asset Management; &
- Water & Sewer Supply Networks.

## *Planning*

- Briefing of consultants and contractors
- Management of consultants
- Tender phase services
- Project cost estimates
- Contract documentation
- Contract administration
- Construction phase services
- Project handover
- Feasibility studies/due diligence
- Concept planning and reporting
- Development approval assessment

# STRUCTURAL ENGINEERING



Our ability to provide practical design techniques to our value for engineering philosophy, gears our design towards the best interest of our clients project. Our expertise covers:

*Residential, Commercial & Industrial Structures:*

- Multi/High Level Rise Buildings
- Mining Structures
- Precast Construction
- Post Tensioned Structures
- Truss & Steel Frame Design
- Foundation Engineering
- Dilapidation Surveys
- Condition Reports
- Bridge Design





As a result of the ever increasing mining industry and growth in communities' industrial and commercial precincts, we are beginning to see the associated environmental concerns rise, particularly in our water ways. The state and federal authorities are further enforcing and developing the need for more appropriately governed water management strategies and policies.

As these implementations continue to raise the cost for private and publicly funded organisations, Moloney & Sons are equipped to effectively address and manage your project for success, offering assistance in:

- flood and risk management studies
- pollution control schemes
- water quality monitoring and reporting
- stormwater quality and quantity remodelling
- stormwater detention/retention basin, floodway and channel design; and
- sediment and erosion control



# WATER & ENVIRONMENTAL MANAGEMENT





# UAV OPERATIONS

In ensuring Moloney & Sons Engineering (MSE) stay true to our commitment in adding value through innovation, MSE have extended their professional services to our existing and new client base through the use of Unmanned Aerial Vehicle (UAV) Operations. Delivering a multidisciplinary range of aerial survey & digital investigation services, to industries such as, Mining & Land Development, Construction & Environmental Impacts.

A brief overview of our expertise and services is included but not limited to the below:

## *Mining & Land Development:*

- 3D Visualisation & DEM enabling;
- Georeferencing; &
- Point Clouds
- Surface Contouring;
- Volumetric assessment; &
- Quality Reporting for data control;
- High end property fly-throughs;

## *Construction:*

- Construction AS-BUILT verification with BIM integration;
- Volumetric Surveys with 3D point clouds
- Geo-referenced Orthomosaics for data acquisition & asset inspection

## *Environmental:*

- Coastal & Cliff-face Mapping;
- Erosion Monitoring

*Key Leadership Team* 



MOLONEY & SONS  
ENGINEERING



*Lloyd Moloney*

MANAGING DIRECTOR


Over the past decade Lloyd has acquired comprehensive experience and expertise in projects ranging from civil infrastructure, major & minor roadworks, stormwater management, public utilities & the delivery of commercial structural buildings. Lloyd has a well-rounded ability to liaise with State and Local Governments in planning, developing legislation and regulations, and a number of other relevant policies. He has developed a positive track record in successfully designing, achieving approval and overseeing the construction of a range of different projects, from State controlled roadworks, to residential and commercial developments. Contract administration, budget and cost control, combined with excellent communication skills and the ability to manage resources to meet the needs of a variety of stakeholders, from general community, to private clients, to Local and State Government authorities, are few of Lloyd's key abilities. Throughout Lloyd's endeavours he stands by three main principles of Excellence, Integrity and Innovation.

From over 27 years in multiple business management disciplines, Stephen has acquired a unique and profound skill set to lead and govern the company's corporate structure. After establishing well founded leadership and business management skills during the period of owning and operating a rural agriculture business in Central Western Queensland, Stephen later went on to work for the Australian Bureau of Agriculture Resource Economics and Science (ABARES) in Financial Performance Analysis and Farm Production. As alike business principles apply, Stephen's rounded and unparalleled skill set, coupled with life moralities of integrity and excellence help found the company's corporate governance and vision.



*Stephen Moloney*

CHIEF FINANCIAL OFFICER



As a Principal Engineer, Derek brings over 22 years experience in the field of Civil Engineering covering all stages of a project from Concept Design through to Construction Finalisation and Operational Maintenance. With technical skills covering a diverse range of infrastructure projects including residential sub division design, major road design, sub division construction and major civil works construction including roads and bridges Derek has the flexibility to meet the Engineering needs for a wide range of infrastructure projects. Coupled with a strong maintenance background Derek is well positioned to provide sound advice on whole of life project development. His extensive supervision and cost effective problem solving abilities mark as him as a real asset to the team.



*Derek Arrowsmith*

PRINCIPAL CIVIL ENGINEER



Julian is a highly-versatile Principal Engineer and Project Manager equipped with over 9 years' experience in construction management, site supervision, civil engineering, and small to large-scale design projects.

Adept communicator able to build and strengthen relationships across functions to drive cohesive, strategic operations; counted on to liaise with clients to determine their needs and goals. Fluent in written and spoken English.

Sound decision maker while under pressure, drawing on almost a decade of experience and dedication to maintaining the highest construction and engineering management standards.

Julian's extensive technical engineering ability, problem solving skills and his "get it done" attitude make him a pleasure to have on our team.

*Julian Salvador*

PRINCIPAL STRUCTURAL ENGINEER

*Assurances*

WE VALUE QUALITY, RELIABILITY AND ACCOUNTABILITY AT  
MOLONEY & SONS.

HAVE A READ OF THE NUMBER OF WAYS YOU CAN BE  
ASSURED OF A GREAT PRODUCT AND QUALITY SERVICE.



*Iso-9001 Quality Assurance*

Independently certified to ISO9001 by LRQA





## *Insurances*

Public Liability: \$20,000,000

Professional Indemnity: \$10,000,000

## *Registered Professional Engineers*

All services are reviewed by staff who are registered as RPEQ  
and/or CPEng



**ENGINEERS  
AUSTRALIA**



**Queensland  
Government**

## *TMR Pre-Qualified Consultant*

Transport and Main Roads Pre-Qualified Consultant for  
Bridge Design Level 1



*Longreach Regional Council*

Pre-Qualified to provide Design, Planning & Engineering services on LRC Infrastructure Design Consulting Services Panel

*Livingstone Shire Council*

Pre-Qualified to provide Design, Planning & Engineering services on LSC Infrastructure Design Consulting Services Panel





*Rockhampton Regional Council*

Registered supplier on the Rockhampton Regional Council pre-qualification panel for Planning, Engineering & Design services

*Coffs Harbour City Council*

Registered Supplier on the CHCC pre-qualification panel for Engineering, Design & Consulting services



**COFFS HARBOUR  
CITY COUNCIL**



*City of Armadale*

Registered supplier on the City of Armadale Council pre-qualification panel for Planning, Engineering & Design services

*Midcoast Council*

Pre-Qualified to provide Design, Planning & Engineering services on Midcoast Council Panel



**MIDCOAST**  
council

# GET IN TOUCH

*We'd love to hear from you*



[info@moloneyandsons.com.au](mailto:info@moloneyandsons.com.au)



+61 488 434 954



[www.moloneyandsons.com.au](http://www.moloneyandsons.com.au)

# Office Locations

## ROCKHAMPTON

3 Sturt Street

Parkhurst Q 4702

P| 0488 434 954

E| [lloyd.moloney@moloneyandsons.com.au](mailto:lloyd.moloney@moloneyandsons.com.au)

## GOLD COAST

45 Nerang Street

Southport Q 4215

P| 0405 255 061

E| [derek.arrowsmith@moloneyandsons.com.au](mailto:derek.arrowsmith@moloneyandsons.com.au)

## BARCALDINE

PO Box 36

Barcaldine Q 4725

P| 0428 777 317

E| [stephen.moloney@moloneyandsons.com.au](mailto:stephen.moloney@moloneyandsons.com.au)



TOWNSVILLE

MACKAY

ROCKHAMPTON

GLADSTONE

ROMA

MILES

CHINCHILLA

BRISBANE

GOLD COAST

TENTERFIELD

COFFS HARBOUR

CANBERRA

SYDNEY



[www.moloneyandsons.com.au](http://www.moloneyandsons.com.au)